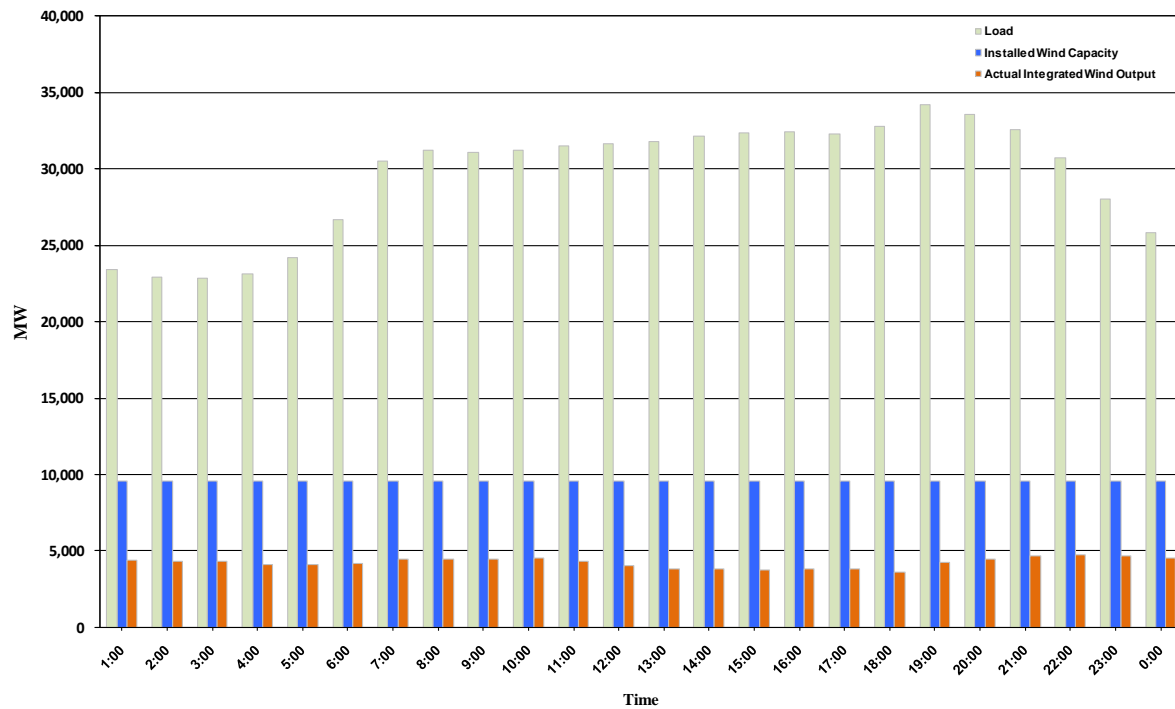




## ERCOT Grid Operations Wind Integration Report: 11/08/10

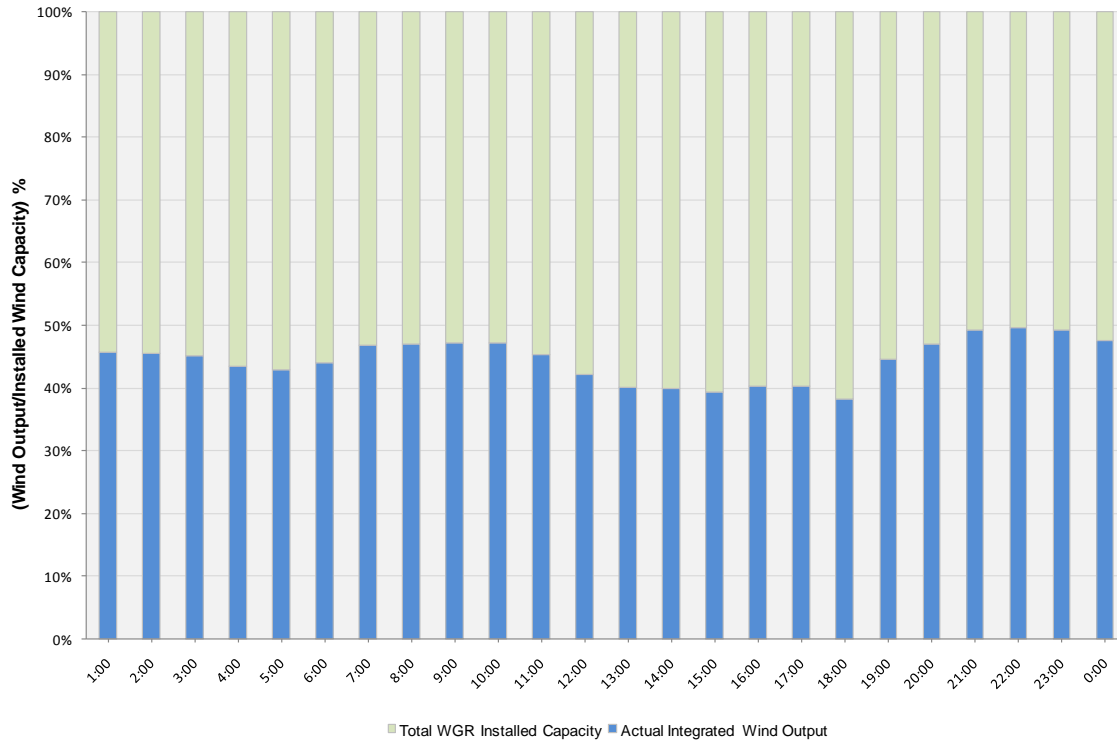
Peak Load	34,223 MW
Load Peak Hour	19
Wind Record 06/12/10	7016 MW
Max Wind value	4878 MW
Wind Peak Hour	22:05:20
Wind Integration %	16.78

Hourly Average Actual Load vs. Actual Wind Output  
11-08-2010

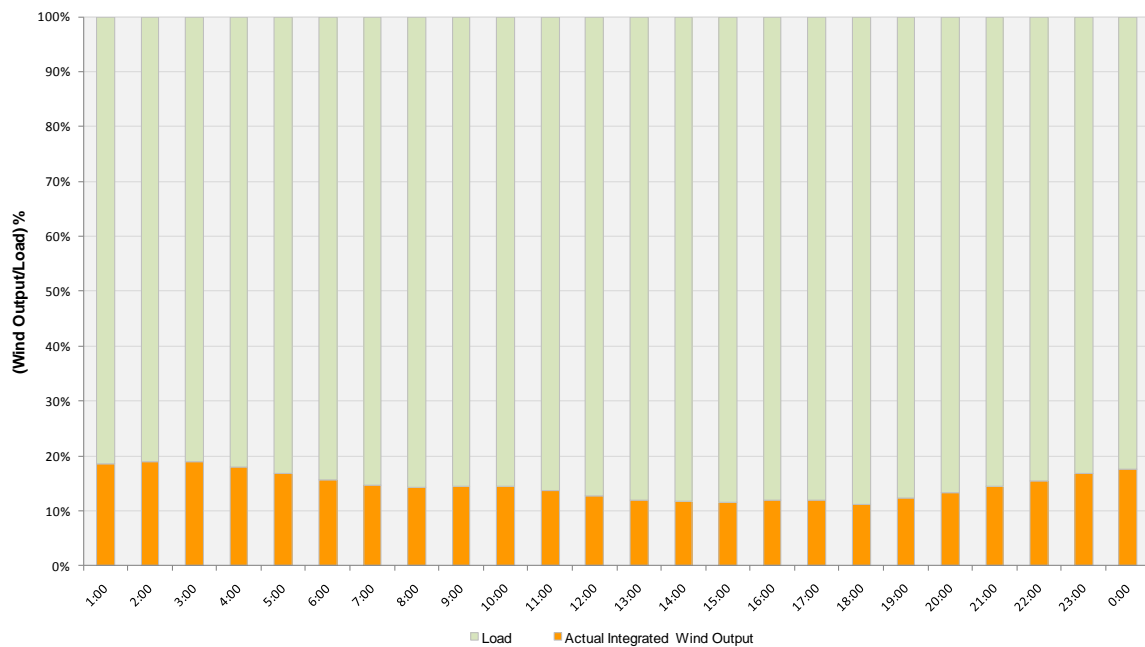




**Actual Wind Output as a Percentage of the Total Installed Wind Capacity**  
**11-08-2010**



**Actual Wind Output as a Percentage of the ERCOT Load**  
**11-08-2010**





ERCOT Load vs. Actual Wind Output 11/01/10 - 11/08/10

